

Fig. 1 Suppl. Gas chromatograms of yeast extracts and identification of enzymic products. The yeast extracts expressing pYES2-BcBAS had a  $\beta$ -amyrin signal at a retention time of 8.5 min.

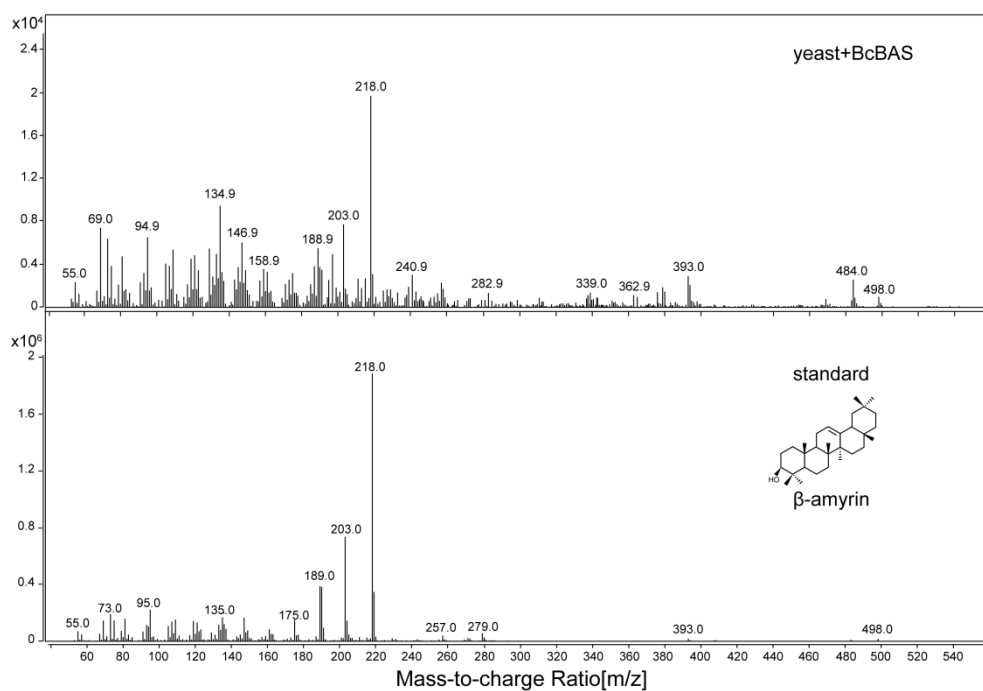


Fig. 2 Suppl. Mass spectrometry of authentic standard and yeast products. The peak detected in the yeast expressing pYES2-BcBAS is the same as in a standard  $\beta$ -amyrin.